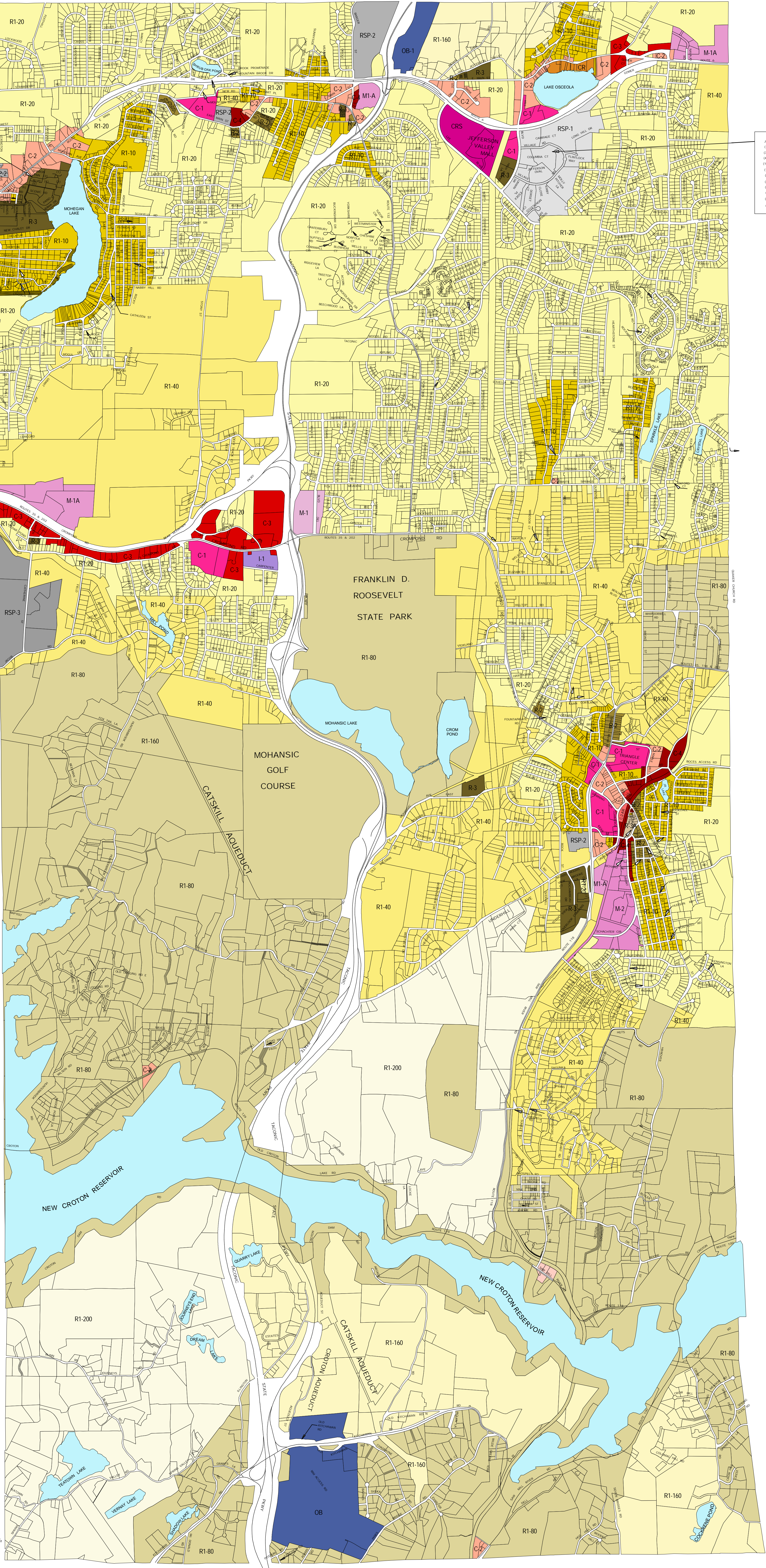


Town of YORKTOWN, NY
UNOFFICIAL
EXISTING ZONING

Existing Zones

- R1-10
- 1/4 acre One-Family Residential
- R1-20
- 1/2 acre One-Family Residential
- R1-40
- 1 acre One-Family Residential
- R1-80
- 2 acre One-Family Residential
- R1-160
- 4 acre One-Family Residential
- R1-200
- 5 acre One-Family Residential
- R-2
- Two-Family Residential
- R-2A
- Multifamily Residential
- R-3
- Multifamily Residential
- R-3A
- Residential Medium-Density
- RSP-1
- Age-Oriented Community
(55 and older)
- RSP-2
- Senior Citizens District
(55 and older)
- RSP-3
- Age-Oriented Geriatric Community
(62 and older or 50 and handicapped)
- CRS
- Regional Shopping Center
- C-1
- Planned Business District
- C-2
- Local Retail Business District
- C-2A
- Local Retail Business District
- C-2A-R
- Local Retail Business District
- CR
- Commercial Recreation
- C-3
- Highway Commercial
- C-4
- General Commercial
- CC
- Country Commercial
- OB-1
- Research Laboratory
- OB-2
- Office
- M-1
- Planned Light-Industrial
- M-1A
- Light-Industrial Park
- M-1B
- Non-Residential Districts
- M-2
- Light-Industrial
- I-1
- Planned Interchange



VILLAGES ON THE LAKE
(1) LAKE SHORE DRIVE
(2) LAKE SHORE DRIVE
(3) LAKE SHORE DRIVE
(4) LAKE SHORE DRIVE
(5) LAKE SHORE DRIVE
(6) LAKE SHORE DRIVE
(7) LAKE SHORE DRIVE
(8) LAKE SHORE DRIVE
(9) LAKE SHORE DRIVE
(10) LAKE SHORE DRIVE

JEFFERSON VILLAGE
(1) ALPINE PL
(2) ANDOVER DR
(3) CAMBRIDGE CT
(4) DEVON CT
(5) HARTFORD CT
(6) HARTFORD CT
(7) HARTFORD CT
(8) HARTFORD CT
(9) HARTFORD CT
(10) HARTFORD CT

